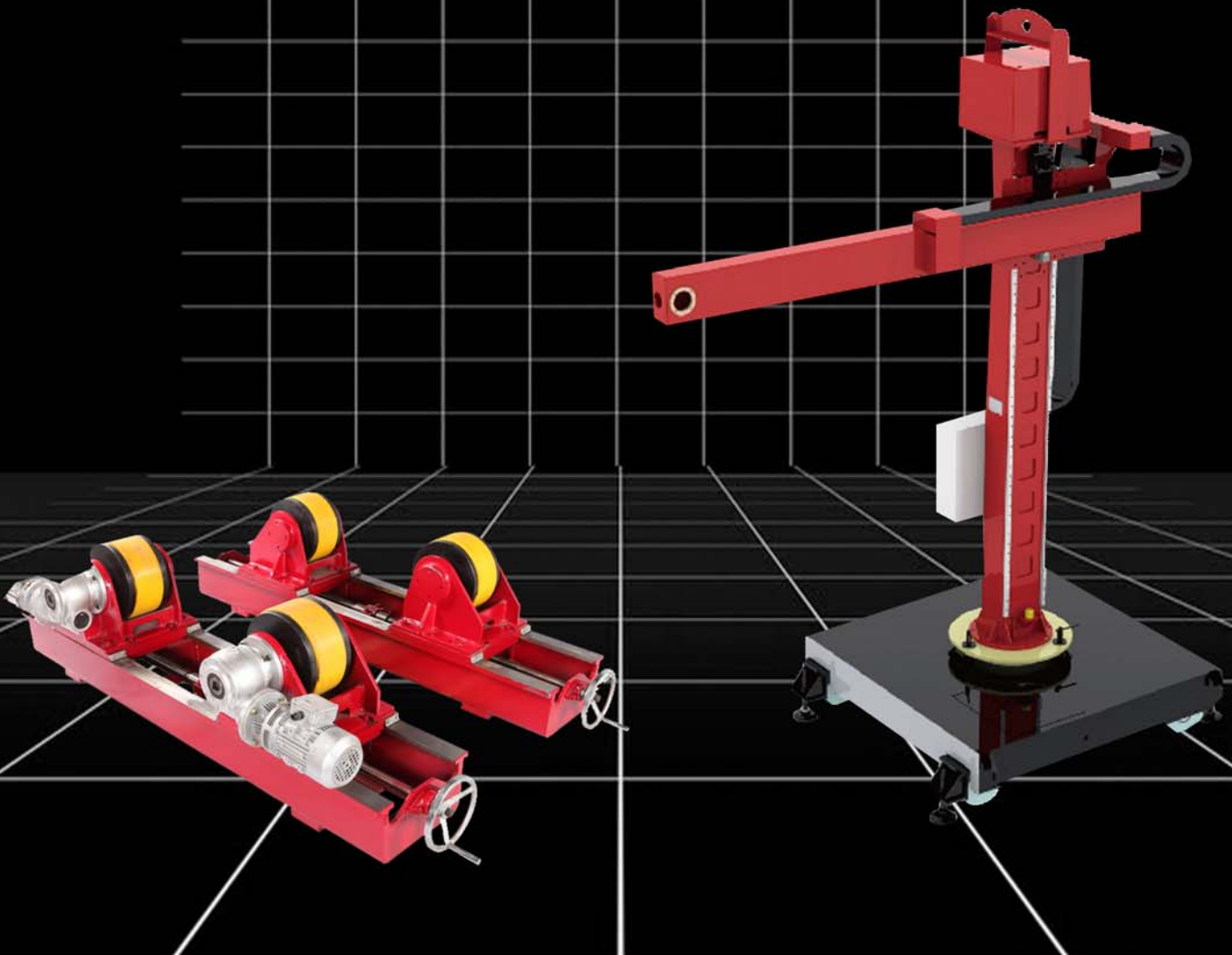




# OTTO ARC SYSTEMS, INC.

SINCE 1988

## AUXILIARY PRODUCTS



[www.ottoarc.com](http://www.ottoarc.com)

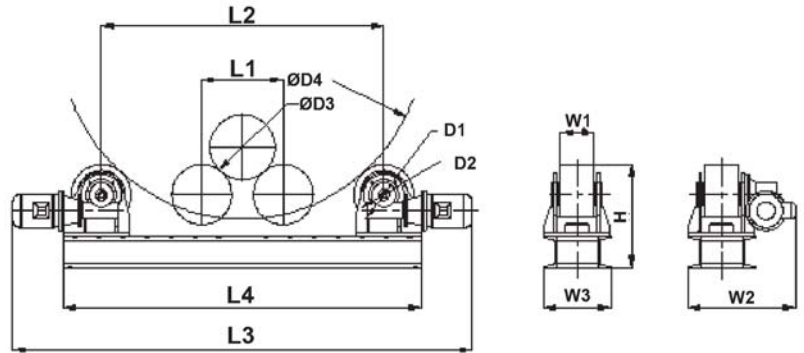
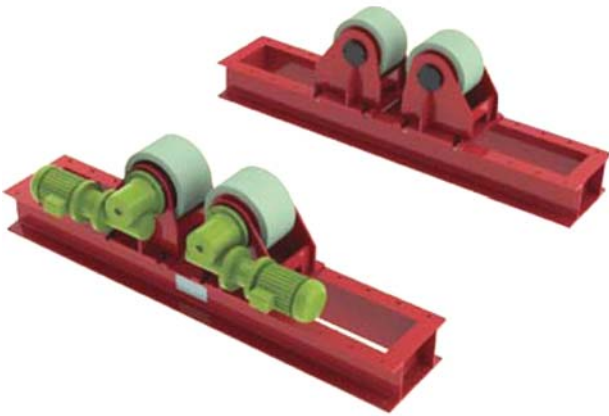
800-878-2487

## Bolt Adjusting Rollers

Whether you are turning small diameter pipe or large industrial vessels, our Bolt Adjusting Rollers are suited for the task. Easy to use and adjustable for a wide range of sizes. They are commonly used in pressure vessel fabrication, wind power fabrication, ship yards, cladding applications, petrochemical and many other industries.

### PERFORMANCE / TECHNICAL

- The distance between the rollers is adjustable by moving the rollers to a different bolt hole location
- Uses worm gears with double motors for smooth rotation
- Speed can be adjusted using the digital display
- AV variable is controlled by the remote pendant



## Bolt Adjusting Rollers

Model		BA-1	BA-2	BA-5	BA-10	BA-20	BA-40	BA-60	
Payload (T)		1	2	5	10	20	40	60	
OD range	D3 (mm / inches)	115 / 4.5"	200 / 7.9"	250 / 9.8"	300 / 11.8"	500 / 19.7"	600 / 23.6"	700 / 27.5"	
	D4 (mm / inches)	500 / 19.7"	1600 / 63"	2300 / 90.5"	2800 / 110"	3500 / 137.8"	4000 / 157.5"	5000 / 196.8"	
Motor power (KW)		2 0.18	2 0.18	2 0.37	2 0.55	2 1.1	2 1.5	2 2.2	
Linear speed (mm/min) (in/min)		(100/1000) (3.9"/1000)							
Speed regulation		AC variable speed							
Material rollers		Polyurethane							
Rubber wheels	D1 (mm / inches)	200 / 7.9"	200 / 7.9"	250 / 9.8"	300 / 11.8"	350 / 13.8"	400 / 15.75"	450 / 17.7"	
	W1 (mm / inches)	110 / 4.3"	110 / 4.3"	150 / 5.9"	170 / 6.7"	200 / 7.9"	240 / 9.5"	240 / 9.5"	
Steel wheels	D2 (mm / inches)	190 / 7.5"	190 / 7.5"	200 / 7.9"	240 / 9.5"	295 / 11.6"	350 / 13.7"	400 / 15.75"	
	W1 (mm / inches)	110 / 4.3"	110 / 4.3"	150 / 5.9"	170 / 6.7"	200 / 7.9"	240 / 9.5"	240 / 9.5"	
Dimensions	Master (mm / inches)	L3	1350 / 53"	1956 / 77"	2038 / 80"	2308 / 90.8"	2866 / 112.8"	3153 / 124"	4165 / 164"
		W2	432 / 17"	457 / 18"	432 / 17"	543 / 21.3"	610.5 / 24"	772 / 30.3"	865 / 34"
	Idle (mm / inches)	L4	825 / 32.5"	1460 / 57.5"	1600 / 63"	1800 / 70.8"	2400 / 94.5"	3000 / 118"	3500 / 137.8"
		W3	280 / 11"	280 / 11"	280 / 11"	330 / 13"	450 / 17.7"	660 / 26"	650 / 25.5"
Height H (mm / inches)		325 / 12.8"	350 / 13.7"	445 / 17.5"	543 / 21.3"	730 / 28.75"	713 / 28"	825 / 32.5"	
weight (KG / LBS)		202 / 445	244 / 536	318 / 701	480 / 1,058	850 / 1,875	1870 / 4,120	3480 / 7,670	
Standard	Body	Base, rollers seat, polyurethane wheels							
	Motor with reduction box	2 motors with 2 reduction boxes							
	Controller	Controller with pendant (6m / 20 foot cable)							
	Power input	220V, 415V, 460V							
Options	Guider pulley	Guide pulley is required when rollers are used in conjunction with our self centering rail system							
	Wireless control pendant	Customer requirement							
	Wheel material	Option for NRB wheels (NITRILE RUBBER BUNA); 100T or heavier model has to use steel wheels							
	Anti-creeping device	For end socket and barrel and customer requirement							
	Power input	(220V, 415V, 460V)±10% three phase							

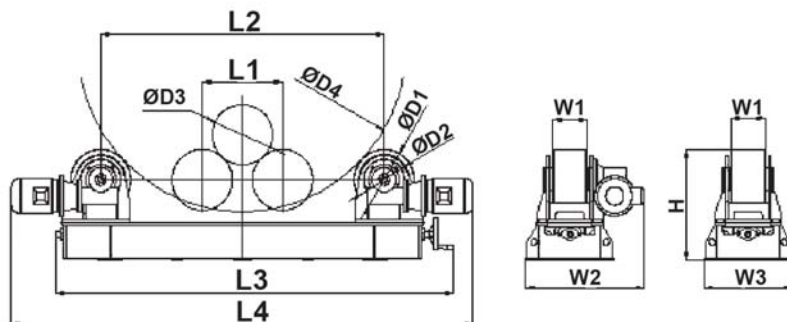
\*All dimensions are for reference only and subject to change without notice. Note: contact us for larger sizes, plus other optional features that can be added to the rollers.

## Screw Adjusting Rollers

Our Screw Adjusting Rollers make the job of changing to different sizes as easy as turning the hand crank to move the rollers in or out. From small pipe to large vessels these tools are capable of handling the job. Widely used in the construction of pressure vessels, small and large pipe sections, boiler vessels, heat exchangers, shipyards, cladding and more.

### PERFORMANCE / TECHNICAL

- This unit is self-adjusting through a wide range, with fast and easy motorized changes
- Uses worm gears with double motors for smooth rotation
- Speed can be adjusted using the digital display
- AV variable is controlled by the remote pendant



## Screw Adjusting Rollers

Model		SA-2	SA-5	SA-10	SA-20	SA-40	
Payload (T)		2	5	10	20	40	
OD range	D3 (mm / inches)	250 / 9.8"	250 / 9.8"	300 / 11.8"	500 / 19.7"	600 / 23.6"	
	D4 (mm / inches)	1000 / 39.3"	2300 / 90.5"	2800 / 110"	3500 / 137.8"	4200 / 165.3"	
Motor power (KW)		0.12	0.37	0.55	1.1	1.5	
Linear speed (mm/min) (in/min)		(100/1000) (3.9"/1000)					
Speed regulation		AC variable					
Material rollers		Steel wheels + polyurethane wheels					
Rubber wheel	D1 (mm / inches)	200 / 7.9"	250 / 9.8"	300 / 11.8"	350 / 13.8"	400 / 15.75"	
	W1 (mm / inches)	110 / 4.3"	150 / 5.9"	170 / 6.7"	200 / 7.9"	240 / 9.5"	
Steel wheel	D2 (mm / inches)	160 / 6.2"	200 / 7.9"	240 / 9.5"	295 / 11.6"	350 / 13.7"	
	W1 (mm / inches)	110 / 4.3"	150 / 5.9"	170 / 6.7"	200 / 7.9"	240 / 9.5"	
Dimensions	Master (mm / inches)	L3	1500 / 59"	1968 / 77.4"	2258 / 88.8"	2756 / 108.5"	3616 / 142.3"
		W2	450 / 17.7"	482 / 19"	593 / 23.3"	651 / 25.6"	690 / 27"
	Idle (mm / inches)	L4	1178 / 46.3"	1772 / 69.8"	1985 / 78"	2660 / 104.75"	3260 / 128.3"
		W3	330 / 13"	380 / 15"	440 / 17.3"	490 / 19.2"	690 / 27"
Height H (mm / inches)		409 / 16"	490 / 19.2"	551 / 21.6"	730 / 28.7"	764 / 30"	
Weight (KG / LBS)		284 / 626	454 / 1,000	770 / 1,697	1364 / 3,000	2257 / 4,975	
Standard	Body	Base, rollers seat, polyurethane wheels					
	Motor with reduction box	2 motors with 2 reduction boxes					
	Controller	Controller with pendant (6m / 20 foot cable)					
	Power input	220V, 415V, 460V					
Options	Guider pulley	Guide pulley is required when rollers are used in conjunction with our self centering rail system					
	Wireless control pendant	Customer requirement					
	Wheel material	Option for NRB wheels (NITRILE RUBBER BUNA); 100T or heavier model has to use steel wheels					
	Anti-creeping device	End socket and barrel per customer requirement					
	Motorized screw rod	Customer requirement					
	Power input	(220V, 415V, 460V) ±10% three phase					

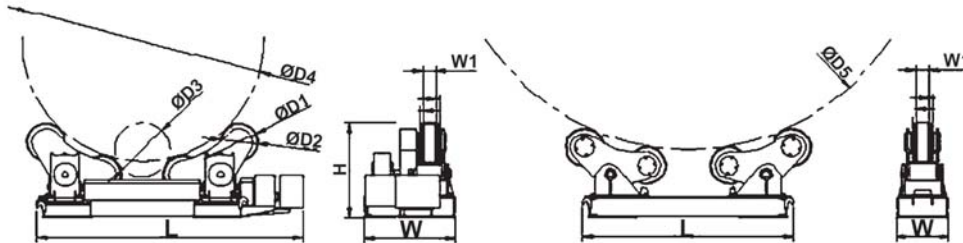
\*All dimensions are for reference only and subject to change without notice.

## Self-Adjusting Rollers

This is the ultimate in pipe and vessel roller systems. It has four motorized rollers which use worm gears to assure a smooth rotation and is self-adjusting through a wide range. Commonly used in pressure vessel fabrication, wind power, small and large pipe sections, boiler vessels, heat exchangers, shipyards, cladding and many more.

### PERFORMANCE / TECHNICAL

- Uses worm gears with double motors for smooth rotation
- Four master wheels driven by smooth gears
- This unit is self-adjusting through a wide range, with fast and easy motorized changes
- Speed can be adjusted using the digital display
- AV variable is controlled by the remote pendant
- Optional rubber wheels available



Model		SFA-5	SFA-10	SFA-20	SFA-40	SFA-60	
Payload (T)		5	10	20	40	60	
OD range		D3 (mm / inches)	250 / 9.8"	320 / 12.6"	500 / 19.7"	750 / 29.5"	
		D5 (mm / inches)	1800 / 70.8"	3600 / 141.7"	4300 / 169.2"	4300 / 169.2"	5000 / 196.8"
Motor power (KW)		0.75	1.1	1.5	3	4	
linear speed (mm/min) (in/min)		(100/1000) (3.9"/1000)					
Speed regulation		AC variable					
Wheels	Rubber wheel (mm / inches)	D1	250 / 9.8"	300 / 11.8"	350 / 13.8"	400 / 15.75"	450 / 17.7"
		W1	130 / 12.5"	170 / 6.7"	200 / 7.9"	250 / 9.8"	250 / 9.8"
	Steel wheel (mm / inches)	D2	240 / 9.5"	240 / 9.5"	295 / 11.6"	350 / 13.7"	400 / 15.75"
		W1	130 / 5.11"	170 / 6.7"	200 / 7.9"	250 / 9.8"	250 / 9.8"
Dimension	Master (mm / inches)	L	1520 / 59.8"	1800 / 70.8"	2230 / 87.8"	2500 / 98.4"	2800 / 110"
		W	800 / 31.5"	670 / 26.3"	791 / 31"	1145 / 45"	1240 / 48.8"
	Idle (mm / inches)	L	1350 / 53.1"	1712 / 67.4"	2040 / 80.3"	2170 / 85.4"	2400 / 94.5"
		W	420 / 16.5"	420 / 16.5"	470 / 18.5"	530 / 20.8"	590 / 23.2"
Height (mm / inches)	H	650 / 25.5"	730 / 28.7"	850 / 33.5"	970 / 38.1"	1130 / 44.5"	
Weight (KG / LBS)		836 / 1,840	1031 / 2,270	1440 / 3,170	3080 / 6,790	4320 / 9,520	
Standard	Body	Base, rollers seat, polyurethane wheels					
	Motor with reduction box	2 motors with 2 reduction boxes					
	Controller	Controller with pendant (6m / 20 foot cable)					
	Power input	220V, 415V, 460V					
Options	Guider pulley	Guide pulley is required when rollers are used in conjunction with our self centering rail system					
	Wireless control pendant	Customer requirement					
	Wheel material	Option for NRB wheels (NITRILE RUBBER BUNA); 100T or heavier model has to use steel wheels					
	Anti-creeping device	End socket and barrel per customer requirement					
	Motorized screw rod	Customer requirement					
	Power input	(220V, 415V, 460V) ±10% three phase					

\*All dimensions are for reference only and subject to change without notice. Note: contact us for larger sizes, plus other optional features that can be added to the rollers.

## Tilting Positioner Series

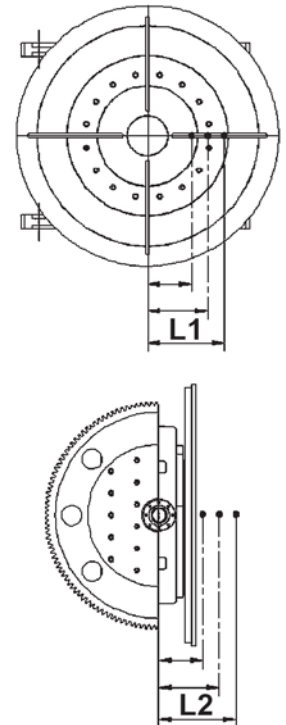
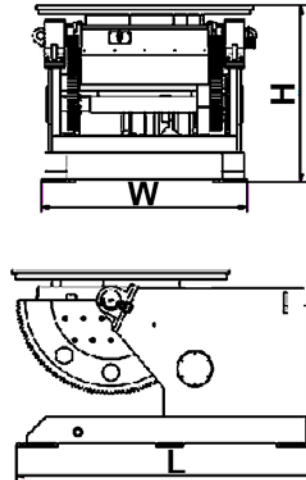
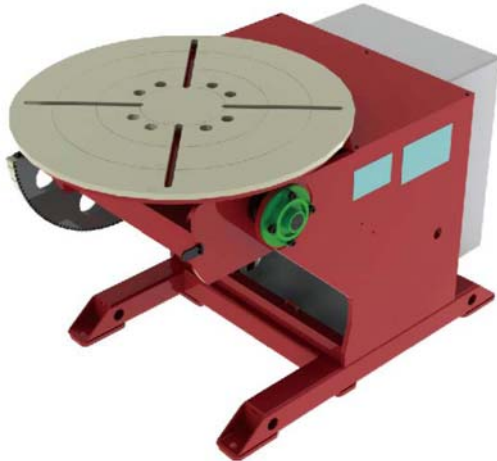
Our welding positioners significantly increase production and make the welder's job much easier when they can rotate the part during the welding process. We have a wide range of accessories available for this style of positioners.

### PERFORMANCE / TECHNICAL

- Heavy duty integral tilt gear
- Electrically activated tilt motor
- Minimal backlash.
- Optional Dynamic Braking on the rotation drives.
- 360 degree rotation, and 90 to 135 degrees of tilt (see spec for particular model)
- High frequency protected.
- Ground capacity 1000 amps

### BENEFITS!

- Built to last!
- Optimal welding position produces consistent high quality welds
- Increased production
- Direct Drive Gears provide smooth operation even under heavy loads for consistent welds at all speeds and loads



Model	TP100	TP300	TP500	TP1000	TP2000	TP3000	
Max. Payload (KG)	100	300	500	1000	2000	3000	
Max. Payload (LBS)	220	660	1100	2200	4400	6600	
Tilting speed (rpm)	Manual	Manual	0.6	0.33	0.3	0.2	
Rotation speed (rpm)	0.3-3	0.15-1.5	0.13-1.3	0.12-1.2	0.05-0.5		
Speed regulation	AC variable						
Tilting angle (°)	0-90	0-90	motorized 0-135		motorized 0-105	motorized 0-120	
Table diameter (mm / inches)	Φ400 / 15.75"	Φ600 / 23.6"	Φ800 / 31.5"	Φ900 / 35.5"	Φ1300 / 51"	Φ1300 / 51"	
Type of table	4 radial T slots	4 radial T slots	4 radial T slots	4 radial T slots	4 radial T slots	4 radial T slots	
Min. gravity center L1 (mm)	100	100	150	150	150	200	
Min. gravity center L1 (inches)	3.9"	3.9"	5.9"	5.9"	5.9"	7.9"	
Min. gravity center L2 (mm)	150	150	200	350	250	300	
Min. gravity center L2 (inches)	5.9"	5.9"	7.9"	13.78"	9.8"	11.8"	
Rotation torque capacity (N.m)	100	300	750	1500	3000	6000	
Tilting torque capacity (N.m)	150	450	1000	3500	5000	9000	
Rotation motor (KW)	0.09	0.18	0.25	0.55	0.75	1.5	
Tilting motor (KW)	N/A	N/A	0.37	0.55	1.5	1.5	
Dimensions	L(mm)	740 / 29"	860 / 33.9"	1280 / 50.3"	1450 / 57"	1570 / 61.8"	1850 / 72.8"
	H(mm)	420 / 16.5"	700 / 27.5"	800 / 31.5"	823 / 32.4"	1000 / 39.3"	1100 / 43.3"
	W(mm)	527 / 20.75"	668 / 26.3"	800 / 31.5"	900 / 35.4"	1090 / 42.9"	1230 / 48.4"
Weight (KG / LBS)	70 / 154	240 / 530	432 / 950	583 / 1285	1030 / 2270	2980 / 6570	
Standard	Body	Base, table plate, gears, rotation support					
	Motor with reduction box	2 motors with 2 reduction boxes					
	Controller	Controller with pendant (6m / 20 foot cable)					
	Power input	380±10% three phase					
Options	Wireless pendant	Customer requirement					
	Foot pedal	Customer requirement					
	Chuck	Customer requirement					
	Power input	(220±10% / 415±10% / 460±10%) three phase					

\*All dimensions are for reference only and subject to change without notice. Note: contact us for larger sizes, plus other optional features that can be added to the rollers.



## Hydraulic Positioner Series

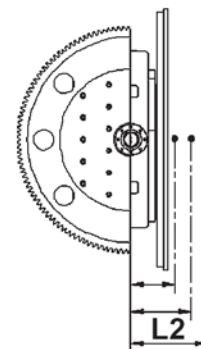
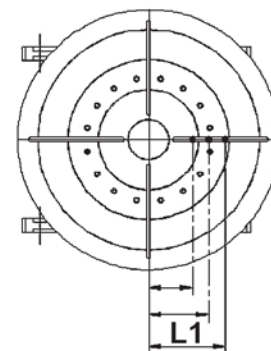
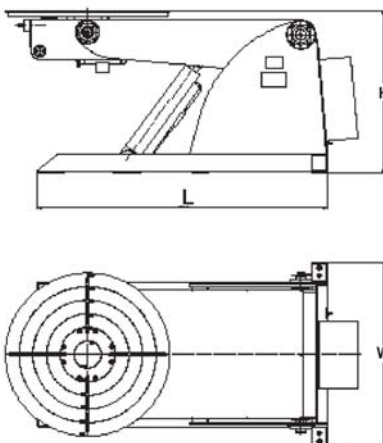
When welding odd shapes and sizes this positioner is ideal for adjusting the height of the table to accommodate these various configurations. We have a wide range of accessories available for this style of positioners.

### PERFORMANCE / TECHNICAL

- Heavy duty integral tilt gear
- Electrically activated tilt motor
- Minimal backlash
- Optional Dynamic Braking on the rotation drives
- 360 degree rotation, 135 degrees of tilt
- High frequency protected
- Ground Capacity 1000 amps

### BENEFITS!

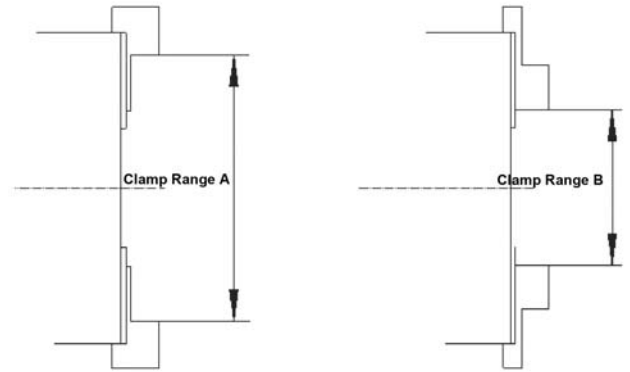
- Built to last!
- Optimal welding position produces consistent high quality welds
- Increased production
- Direct Drive Gears provide smooth operation even under heavy loads for consistent welds at all speeds and loads



Model		HP300	HP1000
Max. Payload (KG)		300	1000
Max. Payload (LBS)		660	2200
Rotation speed (rpm)		0.1-1	0.1-1
Speed regulation		AC variable	
Swing arm (°)		Hydraulic 0-45	
Hydraulic swing arm travelling (mm / inches)		340 / 13.3"	710 / 28"
Tilting (°)		Hydraulic 0-135	
Table diameter (mm / inches)		Φ700 / 27.5"	Φ1200 / 47.25"
Type of table		4 radial T slots	
Min. gravity center L1(mm)		100	150
Min. gravity center L1 (inches)		3.9"	5.9"
Max. gravity center L2(mm)		300	300
Min. gravity center L2 (inches)		11.8"	11.8"
Rotation torque capacity (N.m)		300	1500
Tilting torque capacity (N.m)		900	3000
Rotation motor (KW)		0.12	0.55
Tilting motor (KW)		1.5	2.5
Dimension	L(mm)	1410 / 55.5"	2120 / 83.5"
	H(mm)	736 / 30"	1200 / 47.25"
	W(mm)	928 / 36.5"	1360 / 53.5"
Weight (KG / LBS)		518 / 1140	1656 / 3650
Standard	Body	Base, table plate, gears, rotation support	
	Motor with reduction box	1	
	Hydraulic cylinders	3	
	Controller	Controller with pendant (6m / 20 foot cable)	
	Power input	380±10% three phase	
Options	Wireless pendant	Customer requirement	
	Foot pedal	Customer requirement	
	Chuck	Customer requirement	
	Power input	(220±10% / 415±10% / 460±10%) three phase	

\*All dimensions are for reference only and subject to change without notice.

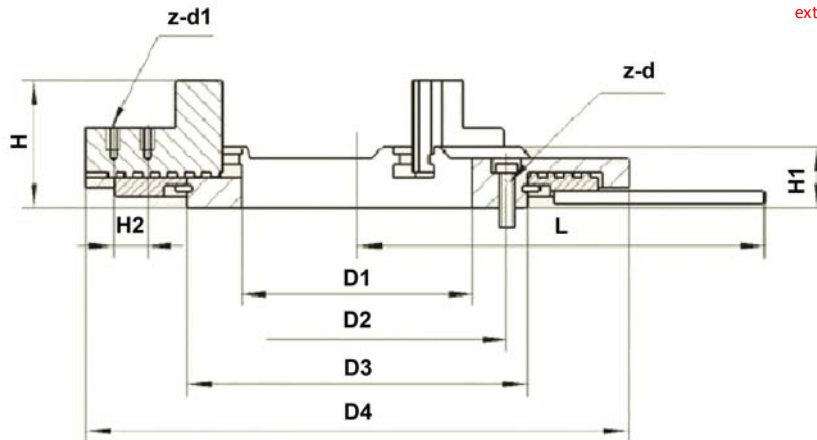
WP series Manual Adjustable Chucks



Clamp ranges

Model	Clamping force		Load capacity		Clamp range A				Clamp range B				Extension clamp range			
	KG	LBS	KG	LBS	METRIC		INCH		METRIC		INCH		METRIC		INCH	
					Min	Max	Min	Max	Min	Max	Min	Max	Min	Max	Min	Max
WP200A	200	441	30	66	110	210	4.33	8.27	10	130	0.39	5.12	5	300	0.20	11.81
WP200	200	441	30	66	110	210	4.33	8.27	20	130	0.79	5.12	5	300	0.20	11.81
WP300	250	551	120	265	170	280	6.69	11.02	80	190	3.15	7.48	10	400	0.39	15.75
WP400	350	772	240	529	250	380	9.84	14.96	120	250	4.72	9.84	20	500	0.79	19.69
WP500	800	1764	600	1323	360	500	14.17	19.69	200	340	7.87	13.39	40	600	1.57	23.62
WP500A	800	1764	600	1323	240	600	9.45	23.62	100	340	3.94	13.39				
WP600	1200	2646	1000	2205	400	620	15.75	24.41	150	410	5.91	16.14	40	1500	1.57	59.06
WP750	1400	3086	1200	2646	550	800	21.65	31.50	380	580	14.96	22.83	40	1500	1.57	59.06

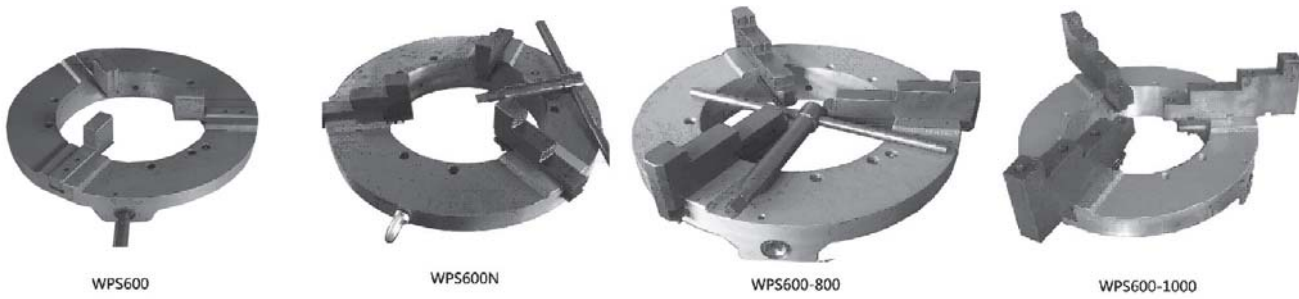
Extended clamp range uses the connecting extended jaws on standard jaws.



Connection Technical Data

Model	D1		D2		D3		D4		H		H1		H2		L		Z-d1	Z-d
	METRIC	INCH	METRIC	INCH	METRIC	INCH	METRIC	INCH	METRIC	INCH	METRIC	INCH	METRIC	INCH	METRIC	INCH		
WP200A	65	2.56	82	3.23	100	4	200	7.87	67.5	2.66	39	1.54	21	0.83	180	7.09	6-M6	3-M8 X 35
WP200	80	3.15	100	3.94	120	5	200	7.87	67.5	2.66	39	1.54	21	0.83	200	7.87	6-M6	3-M8 X 35
WP300	100	3.94	120	4.72	150	6	300	11.81	67.5	2.66	39	1.54	21	0.83	240	9.45	6-M6	3-M8 X 30
WP400	170	6.69	220	8.66	250	10	400	15.75	95	3.74	45	1.77	25	0.98	300	11.81	6-M6	3-M10 X 40
WP500	240	9.45	280	11.02	320	13	500	19.69	110	4.33	60	2.36	25	0.98	350	13.78	6-M6	3-M12 X 55
WP600	365	14.37	400	15.75	425	17	600	23.62	170	6.69	105	4.13	40	1.57	425	16.73	6-M12	3-M12 X 110
WP750	515	20.28	542.5	21.36	570	22	750	29.53	170	6.69	105	4.13	40	1.57	500	19.69	6-M12	3-M12 X 110

## WPS Series Chucks



Model	Clamp Range			
	Metric		Inch	
	Min.	Max.	Min.	Max.
WPS600	150	620	5.91	24.41
WPS600N	250	700	9.84	27.56
WPS600-800	50	800	1.97	31.50
WPS600-1000	150	1000	5.91	39.37

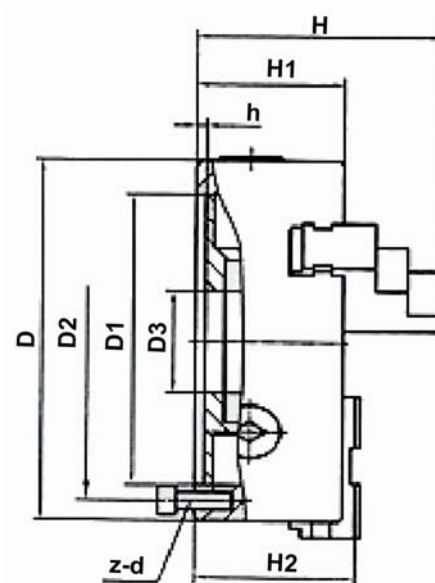
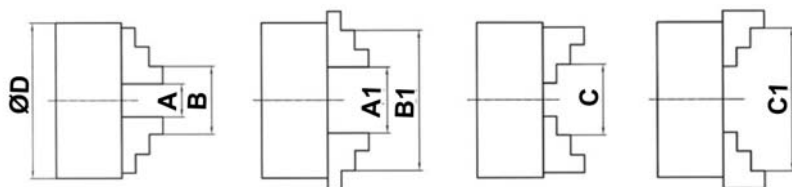
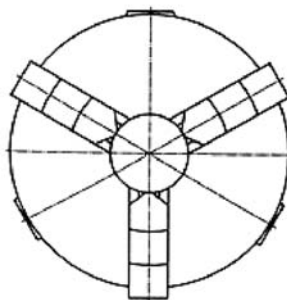
## WPT Series Chucks



Model	Internal jaws				External jaws				Weight		Load capacity	
	Metric		Inch		Metric		Inch		KG	LBS	KG	LBS
	Min.	Max.	Min.	Max.	Min.	Max.	Min.	Max.				
WPT600	85	530	3.35	20.87	170	615	6.69	24.21	68	150	1000	2205
WPT1000	5	950	0.20	37.40	170	1080	6.69	42.52	140	309	1000	2205



# K11 SERIES 3-JAW SELF-CENTERING CHUCK



Chuck model	internal Jaw				External Jaw	
	Inch					
SIZE	Clamping range		Clamping range		Clamping range	
	A	A'	B	B'	C	C'
10	0.24	4.33	3.15	9.84	3.54	9.84
12.8	0.39	5.91	3.74	12.80	4.33	12.80
15	0.59	8.27	4.72	14.96	4.72	14.96
16	0.59	8.27	4.72	15.75	4.72	15.75
20	0.98	11.02	5.91	19.69	5.91	19.69
25	1.97	13.78	6.69	24.80	6.69	24.80
32	5.91	17.72	11.81	31.50	15.75	31.50
40	5.91	23.62	11.81	39.37	15.75	39.37
50	13.78	33.46	17.72	49.21	21.65	49.21

Chuck Dimensions									
Metric									
Size D	D1	D2	D3	H	H1	H2	h	Z-D	WT (kg)
250C	206	226	80	130	80	84	5.0	3-M12	23.20
325C	296	296	105	155	90	96	7.5	3-M16	42.00
380C	325	350	135	163.5	98	103.5	7.5	3-M16	60.00
400C	340	368	130	158.5	102	106.5	6.0	3-M16	65.80
500C	440	465	200	197	115	121	6.5	3-M16	116.20
630C	560	595	270	211.3	123	130.3	8.0	3-M16	208.00
800C	710	760	385	247	149	157	8.0	3-M20	305.00
1000C	910	950	400	278.6	176	185	8.0	3-M24	630.00
1250C	1160	1200	660	280.6	178	187	10.0	3-M24	975.00

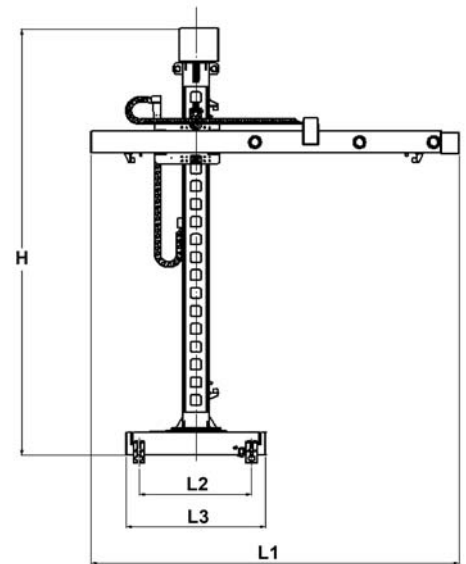
\*If the Chuck OD is more than table diameter, table size will need to be modified to a larger size to suit Chuck.

## Light Load Manipulator Series

We manufacture a complete line of light load column and boom welding manipulators which maximize both safety and production with load capacities up to 176 lbs. Our column and boom welding manipulators are designed for TIG, MIG/MAG, PAW or SAW welding processes for a turn-key automated welding system. Manual or powered Trolley base cars are an option that can be included for varying length weldments such as seam welders.

### PERFORMANCE / TECHNICAL

- Built-in fail safe system to prevent boom from falling
- Uses linear guide rail
- Transmission is rack and gear
- Remote pendant
- Customized systems are available



Model	LM2000	LM3000	LM4000
Effective vertical travel (mm / inches)	2000 (78.75")	3000 (118")	4000 (157.5")
Effective horizontal travel (mm / inches)	2000 (78.75")	3000 (118")	4000 (157.5")
Boom horizontal travelling speed (mm/min) (in/min)	110-1100 / 4.3"- 43.3"		
Speed regulation	AC variable		
Boom vertical travelling speed (mm/min) (in/min)	850 / 33.5"		
Min. lift distance from floor to center of boom (mm / inches)	525 (20.6")	525 (20.6")	525 (20.6")
Max. payload (KG / LBS)	80 / 176 lbs.		
Dimension (H*L1) mm	4128 x 3321	5128 x 4355	6255 x 5020
Dimension (H*L1) inches	162.5" x 130.75"	201.8" x 171.4"	246.25" x 197.6"
<b>Option Trolley</b>			
Trolley traveling speed (mm/min) (in/min)	manual / motorized 1500 (59")		
Center distance driving wheels for motorized trolley (mm / inches) (L2)	1500 (59")		
Column rotation angle (°)	+/-180		
Column rotation type	manual		
Trolley Dimension (L3) (mm / inches)	1960 x 1799 (77" x 70.8")		
Weight (manual trolley) (KG / LBS)	1554 (3,425lbs.)	1802 (3,970lbs.)	1872 (4,127lbs.)
Weight (motorized trolley) (KG / LBS)	1609 (3,547lbs.)	1857 (4,000lbs.)	1926 (4,246lbs.)
Standard	Body	Column/boom/slide carriage/chain/linear guider way/anti-dropping device/cable assembly	
	Motor with reduction box	2	
	Controller	Controller with 6m pendant	
	Power input	220V, 415V, 460V	
Options	Trolley	manual / motorized	
	Swing mechanism	manual	
	Slider (mm / inches)	Manual slider: 100 (3.9") /150 (5.9") /300 (11.8")	
		Motorized slider: 60 (2.4") /150 (5.9") /300 (11.8")	
	Wireless pendant	Customer requirement	
Power input	220±10% / 415±10% / 460±10% three phase		

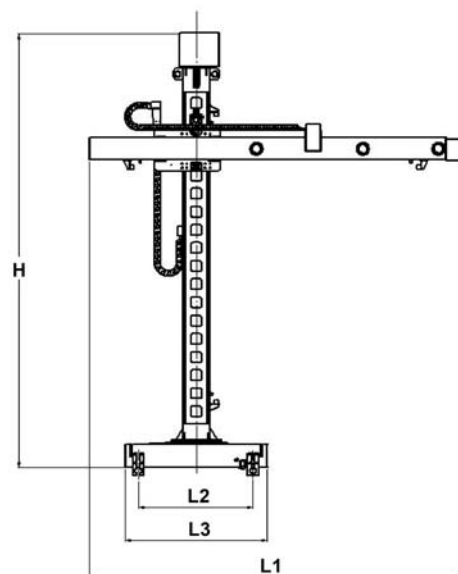
\*All dimensions are for reference only and subject to change without notice.

## Medium Load Manipulator Series

We manufacture a complete line of medium load column and boom welding manipulators which maximize both safety and production with load capacities up to 264 lbs. Our column and boom welding manipulators are designed for TIG, MIG/MAG, PAW or SAW welding processes for a turn-key automated welding system. Manual or powered Trolley base cars are an option that can be included for varying length weldments such as seam welders.

### PERFORMANCE / TECHNICAL

- Built-in fail safe system to prevent boom from falling
- Uses linear guide rail
- Transmission is rack and gear
- Remote pendant
- Customized systems are available



Model	MM3000	MM4000	MM5000
Vertical travel (mm / inches)	3000 (118")	4000 (157.5")	5000 (196.85")
Horizontal travel (mm / inches)	3000 (118")	4000 (157.5")	5000 (196.85")
Boom horizontal travelling speed (mm/min) (in/min)	110-1100 / 4.3"- 43.3"		
Speed regulation	AC variable		
Boom vertical travelling speed (mm/min) (in/min)	850 / 33.5"		
Min. lift distance from floor to center of boom (mm / inches)	790 (31")	790 (31")	790 (31")
Max. payload (KG / LBS)	120 (264lbs.)		
Dimension (H*L1) mm	5360 x 4816	6360 x 5816	7360 x 6816
Dimension (H*L1) inches	211" x 189.6"	250.4"x 229"	289.75" x 268.5"
<b>Option Trolley</b>			
Trolley traveling speed (mm/min) (in/min)	manual / motorized 1500 (59")		
Center distance driving wheels for motorized trolley (L2) (mm / inches)	1800 (70.9")		
Column rotation angle (°)	+/-180		
Column rotation speed (rpm)	manual / motorized 0.1		
Trolley Dimension (L3) (mm / inches)	2185x2099 (86" x 82.6")		
Weight (manual trolley) (KG / LBS)	1752 (3,860lb.s)	1971 (4,345lbs.)	2190 (4,830lbs.)
Weight (motorized trolley) (KG / LBS)	2344 (5,200lbs.)	2562 (5,650lbs.)	2780 (6,130lbs.)
Standard	Body	Column/boom/slide carriage/chain/linear guider way/anti-dropping device/cable assembly	
	Motor with reduction box	2	
	Controller	Controller with 6m pendant	
	Power input	220V, 415V, 460V	
Options	Trolley	manual / motorized	
	Swing mechanism	manual	
	Slider	Manual slider: 100 (3.9") /150 (5.9") /300 (11.8") Motorized slider: 60 (2.4") /150 (5.9") /300 (11.8")	
	Wireless pendant	Customer requirement	
	Power input	220±10% / 415±10% / 460±10% three phase	

\*All dimensions are for reference only and subject to change without notice. Please note we also have "heavy" and "super heavy" manipulator options available.

**SUMMER 2015**



[www.ottoarc.com](http://www.ottoarc.com)

Distributor/Sales Representative Information:

[Empty rounded rectangular box for distributor information]

**OTTO ARC SYSTEMS, INC. (USA)**

3921 Sandstone Drive • El Dorado Hills, CA • 95762  
Phone: 916-939-3400 • Fax: 916-939-0912 • Toll Free: 800-878-2487

**OTTO ARC SYSTEMS, INC. (CHINA)**

A 4th Floor • Block 2 • 398 Tian Lin Road • Shanghai, China • Postcode 200233  
Phone: 0086 (0)21-5490 2005/6 • Fax: 0086 (0)21-5418 6067